



# MXB-HD

POWERING THE DIGITAL SIGNAGE REVOLUTION

MEDIA SERVER CONFIGURATION

## Xtreme Benefits

- Affordable turnkey package designed specifically for HDTV broadcast, CATV, IPTV and PEG channel applications.
- Includes two hours of *free* one-on-one Internet-based training to help you get on-air in the fastest, most beneficial way. (Additional training available.)
- Allows remote management of scheduling and media content updates over network for greatest operation efficiency.
- Perfect match for HD television systems achieving the sharpest image possible using high definition digital media.
- Wide digital media support allows producers to re-purpose existing content so production time and cost is minimized.
- MediaZone software (included) allows simple playlists or complex media sets to be developed and changed quickly with no time-wasting rendering.

## Xtreme Features

- Includes broadcast-quality HD serial digital (HD-SDI) keyer card
- Includes Internet weather for auto-updating of local conditions
- Includes InstaCrawl Alert software for local emergency messaging
- Includes Playlog software for logging time/date stamps on media schedules
- Built-in support for reading and displaying RSS feeds
- Built-in support for MPEG 1-4 WMV, H.264, VOB, PPT, AVI (1), MOV
- Built-in support for animated GIF logos
- Built-in support for Flash™ animations
- Built-in support for HTML page capture

## Xtreme Software

- Includes professional MediaZone playlist/ media set editor program
- Includes broadcast-quality 24-bit character generator (MediaCreator CG)

## Turnkey Automated Playout Server with HDTV Keyer and MediaZone Software

The *MediaXtreme Broadcast MXB-HD* elevates digital media playback to new heights by putting our same powerful media scheduling, management and playback tools in the hands of anyone who needs HDTV video output.

Affordable and media rich, the MXB-HD delivers the automated HDTV program playback and commercial overlay capabilities broadcasters and cablecasters need to tap into emerging sources of advertising revenue tied to multicast and narrowcast digital television transmission.

With the MXB-HD, the integrity of the original digital signal is carried through to the distribution network providing exceptional performance. By eliminating unnecessary external conversions that limit bandwidth and add unwanted noise, quality is increased and cost is further reduced.

The MXB-HD comes turnkey with our powerful MediaZone editor, the same software that has revolutionized digital signage network control.

It is designed to deliver many of the same benefits of a non-linear editor without all of the rendering time! The result is the ability to deliver the broadcast look without having to spend lots of time re-rendering changes to the scheduled program.

Imagine being able to layer multiple on-screen events such as animations, MPEG 1-4, H.264, AVI, VOB, MOV, graphics, crawls, logos and scrolls just by dragging the media files into one of four "zones" and pressing the Preview button. Simply upload the playlist via your network to one or multiple units. Update content or schedules with the MediaZone editor anytime while on-air.

Best of all, MediaXtreme Broadcast comes with our unsurpassed **TotalCARE** warranty, which covers the hardware, software and support for one full year and may be extended for up to five years. The MXB-HD puts HDTV quality media where your viewers are. Why not put the power and flexibility of X to work for you?



Copyright © 2008 Keywest Technology, Inc. All Rights Reserved

14563 W 96th Terrace • Lenexa KS 66215 USA • Call 800-331-2019 – Int'l 01-913-492-4666 [www.keywesttechnology.com](http://www.keywesttechnology.com)

Our No Worry  
Warranty



Comes with  
MediaXtreme  
Broadcast

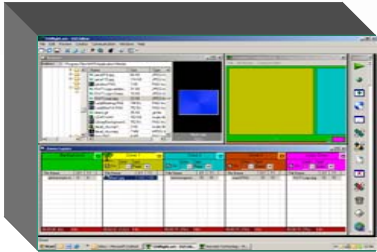


# MXB-HD

## POWERING THE DIGITAL SIGNAGE REVOLUTION

## MEDIA SERVER CONFIGURATION

### MediaZone Editor



Building and scheduling digital media for a professional look has never been easier! Our easy-to-use template manager with built-in "media zones" allows you to create a specialized look with minimal effort. From the handy browser directory, simply drag 'n drop media files to the template zone of choice. In addition, motion backgrounds, color boxes, CG fonts, crawls, live data, graphics, scrolls and on-screen animated logos may be added to the display template.

### MediaCreator CG



Bundled with MediaZone is the time-tested MediaCreator CG program that uses familiar editing conventions so your learning time is greatly reduced. MediaCreator Tru-Type fonts, crawls, scrolls, logos, and graphics are directly supported by the MediaZone editor making time-wasting conversions unnecessary. Alpha channel support allows quick and easy layering of all CG graphics directly over a HDTV signal or other digital media with no rendering.

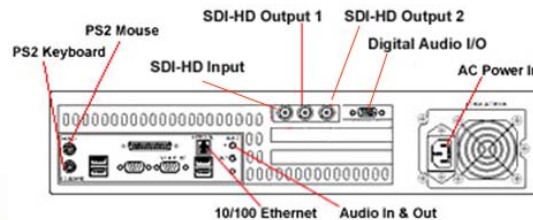
### HD Quality TV



Are you still using unflattering analog video to communicate important community events and information, or even worse, local programming and advertising? Dump that tired, old system and re-invigorate your local origination channel with the all-digital MXB-HD. Being local doesn't mean you have to be second best. Step up to Media Xtreme Broadcast and your audience will take notice.



Media Xtreme MXB-HD Broadcast Server



### MECHANICAL

DIMENSIONS: 2-RU Rack Mount Chassis

3.5" (8.9)H x 19.0" (48.3)D x 17.0" (43.2)W inches (cm)

WEIGHT (actual):13.5 lbs. (6.12kg) (Shipping DIM):30 lbs. (13.6kg)

### HDTV TECHNICAL SPECIFICATIONS

- (1) 75ohm BNC Input (HD-SDI)
- (2) 75ohm BNC Output (HD-SDI)
- AES Audio Input: 2 Channels unbalanced AES/EBU
- AES Audio Output: 2 Channels unbalanced AES/EBU
- SDI Audio Input: 8 Channel support
- SDI Audio Output: 8 Channel support

### HDTV STANDARDS

HD Format: 1080PsF23.98/24, 1080i48, 1080i50, 1080i59.94, 720p59.94, 720p60, 720p50

SDI Compliance: SMPTE 292M, 259M, 296M, 372M, and ITU-R BT.656, .601

### MEDIAZONE SOFTWARE REQUIREMENTS

- Windows® 2000 / XP-Pro/ Vista™ OS
- Intel Pentium® 4, Centrino Duo®, or AMD® 1.8GHz CPU
- 32-bit Graphics w/ 256MB onboard video memory
- 1GB RAM (2GB Vista)
- Direct-X 9.0
- 10/100 Base-T Ethernet network connection required

### ENVIRONMENTAL

- Operating Temperature: 0-40°C
- Storage Temp: -20°C to +70°C non-condensing
- Humidity: 90% max non-condensing

### DATA STORAGE:

- 200GB HDD Standard – Expandable to 400GB

### POWER

- PSU: 100/240 VAC, 47-63 Hz 55W (UL/CE)

Specification subject to improve without notice